

Annual Report 2018

The following report has been prepared in response to the Australian Government requirements that schools report on specific issues to their stakeholders on an annual basis. This report relates to information from the operation of Fahan School in 2018.

Fahan School is an outstanding school for girls providing valued education and quality boarding facilities to girls from Kindergarten to Year 12. Fahan School also provides education to boys from Kindergarten to Year 2.

Our purpose is to empower each of our girls to achieve and contribute through Education, Experience, Environment, Enjoyment, Enquiry and Innovation.

Fahan School is set amongst magnificent gardens and tranquil environment overlooking the picturesque Derwent River.

During 2018, there were 409 students enrolled including 3 international students, with 15 students boarding at Fahan School.

Fahan School aims to provide an excellent education experience for its students, while at the same time allowing time for reflection and the development of personal, social and community life skills.

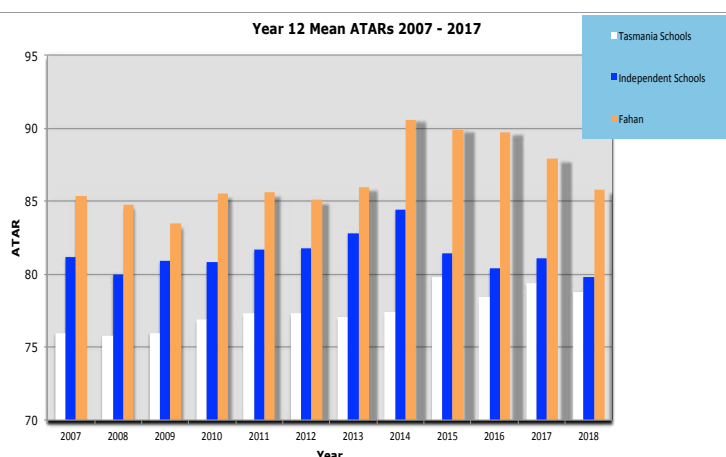
The passionate and outstanding team of educators and staff at Fahan live and promote the values of the School. Fahan employs a team of highly skilled professionals who are dedicated to providing leading education for girls. The consistently high results achieved by our students are testament to the commitment and quality of education provided by the Fahan School team.

More information is available on our website www.fahan.tas.edu.au.

Student Outcomes

Students are encouraged to achieve their potential and continue their studies post – Year 12 at university, TAFE or move to satisfying and fulfilling work opportunities.

In 2018, students completing Year 12 at Fahan School received outstanding results across a range of subject areas. In summary, 100% of students were successful in gaining ATARs, with 25% achieving an ATAR above 95. Based on TASC (formerly TQA) figures, Fahan School has the highest percentage of students gaining an ATAR and the highest Mean ATAR of any school in the State averaged over the last 12 years.



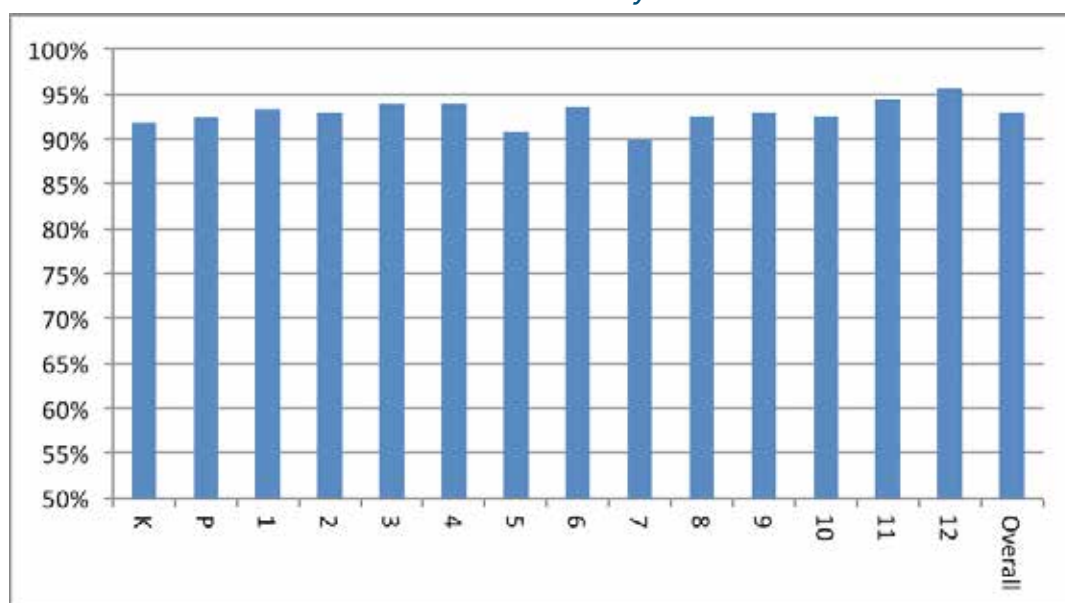
A summary of the 2018 post school destinations for Fahan School Year 12 students is shown in the following table.

School Year - 2018	Number of Students	Percentage of Students
Students studying at University	10	36%
Students who gained entrance to university now working (GAP)	15	54%
Students studying at TAFE	2	7%
Students working	1	3%
Total Year 12 Students	28	100%

Attendance

The average student attendance rate in 2017 was 93% comprised as follows:

Attendance Rates by Year



Attendance Policy:

Student attendance is managed, recorded and monitored in accordance with the School's attendance procedure, a copy of which is available on request.

NAPLAN Results

99.3% of scores obtained by Fahan students in 2018 were at or above the National Minimum Standard. Fahan School was ranked in the Top 50 Girls Schools in the Nation in 2012 and 2013 and in the Top 100 Schools Nationally in 2011 and 2012.

The table overleaf indicates Standardised Test results of Fahan School students in the areas of reading, writing and numeracy for Years 3, 5, 7 and 9 over the last ten years. The percentage variance shown is a comparison with the previous years and also this year's Tasmanian and National means. It must be noted that the comparison relates to two different sets of students, i.e Year 3 in 2018 compared with Year 3 in 2017.

Fahan School NAPLAN Results

Mean score comparison against previous years with % variance

Year 3	Reading		Writing		Spelling		Grammar		Numeracy	
Fahan 2018	529		453		443		529		478	
Fahan 2017	464	14%	424	7%	435	2%	497	6%	435	10%
Fahan 2016	461	15%	452	0%	471	-8%	505	5%	435	10%
Fahan 2015	479	10%	465	-3%	438	-1%	465	14%	404	18%
Fahan 2014	467	13%	432	5%	446	-2%	448	18%	368	30%
Fahan 2013	468	13%	456	-1%	429	1%	460	15%	412	16%
Fahan 2012	495	7%	456	-1%	445	-2%	461	15%	425	12%
Fahan 2011	494	7%	466	-3%	458	-5%	501	6%	469	2%
Fahan 2010	492	8%	458	-1%	410	6%	447	18%	466	3%
Fahan 2009	476	11%	456	-1%	444	-2%	460	15%	464	3%
Fahan 2008	447	18%	483	-6%	460	-5%	473	12%	434	10%
Similar	494	7%	441	3%	445	-2%	468	13%	450	6%
Tasmania	426	24%	394	15%	398	9%	410	29%	402	19%
Australia	434	22%	407	11%	418	4%	432	22%	408	17%

Year 5	Reading		Writing		Spelling		Grammar		Numeracy	
Fahan 2018	567		515		544		577		546	
Fahan 2017	553	3%	520	-1%	524	4%	571	1%	530	3%
Fahan 2016	530	7%	534	-4%	529	3%	546	6%	517	6%
Fahan 2015	579	-2%	534	-4%	539	1%	560	3%	553	-1%
Fahan 2014	535	6%	490	5%	506	8%	530	9%	505	8%
Fahan 2013	544	4%	526	-2%	535	2%	543	6%	513	6%
Fahan 2012	537	6%	509	1%	499	9%	557	4%	545	0%
Fahan 2011	589	-4%	541	-5%	515	6%	598	-4%	552	-1%
Fahan 2010	529	7%	535	-4%	539	1%	577	0%	525	4%
Fahan 2009	534	6%	491	5%	509	7%	538	7%	510	7%
Fahan 2008	520	9%	497	4%	484	12%	525	10%	510	7%
Similar	550	3%	479	8%	515	6%	530	9%	515	6%
Tasmania	497	14%	447	15%	483	13%	486	19%	478	14%
Australia	509	11%	465	11%	503	8%	504	14%	494	11%

Year 7	Reading		Writing		Spelling		Grammar		Numeracy	
Fahan 2018	576		546		575		573		569	
Fahan 2017	589	-2%	564	-3%	569	1%	593	-3%	581	-2%
Fahan 2016	574	0%	555	-2%	569	1%	576	-1%	570	0%
Fahan 2015	584	-1%	566	-4%	598	-4%	594	-4%	592	-4%
Fahan 2014	593	-3%	559	-2%	572	1%	601	-5%	583	-2%
Fahan 2013	595	-3%	568	-4%	568	1%	579	-1%	593	-4%
Fahan 2012	589	-2%	580	-6%	579	-1%	605	-5%	571	0%
Fahan 2011	591	-3%	593	-8%	584	-2%	622	-8%	599	-5%
Fahan 2010	609	-5%	570	-4%	575	0%	619	-7%	607	-6%
Fahan 2009	601	-4%	592	-8%	571	1%	608	-6%	542	5%
Fahan 2008	611	-6%	602	-9%	573	0%	596	-4%	580	-2%
Similar	576	0%	529	3%	561	2%	567	1%	571	0%
Tasmania	537	7%	493	11%	529	9%	532	8%	536	6%
Australia	509	11%	465	11%	503	8%	504	14%	494	11%

Year 9	Reading		Writing		Spelling		Grammar		Numeracy	
Fahan 2018	624		580		616		615		606	
Fahan 2017	631	-1%	620	-6%	635	-3%	632	-3%	614	-1%
Fahan 2016	626	0%	626	-7%	632	-3%	627	-2%	614	-1%
Fahan 2015	636	-2%	621	-7%	606	2%	615	0%	624	-3%
Fahan 2014	635	-2%	607	-4%	630	-2%	640	-4%	608	0%
Fahan 2013	636	-2%	633	-8%	636	-3%	655	-6%	626	-3%
Fahan 2012	665	-6%	637	-9%	635	-3%	659	-7%	632	-4%
Fahan 2011	636	-2%	677	-14%	630	-2%	627	-2%	607	0%
Fahan 2010	631	-1%	589	-2%	607	1%	626	-2%	615	-1%
Fahan 2009	647	-4%	650	-11%	631	-2%	639	-4%	632	-4%
Fahan 2008	644	-3%	661	-12%	638	-3%	653	-6%	607	0%
Similar	621	0%	576	1%	608	1%	610	1%	621	-2%
Tasmania	577	8%	523	11%	566	9%	568	8%	582	4%
Australia	584	7%	542	7%	583	6%	580	6%	596	2%

Other Student Matters

78% of the Fahan School cohort in 2016 enrolled in Year 12 in 2018.

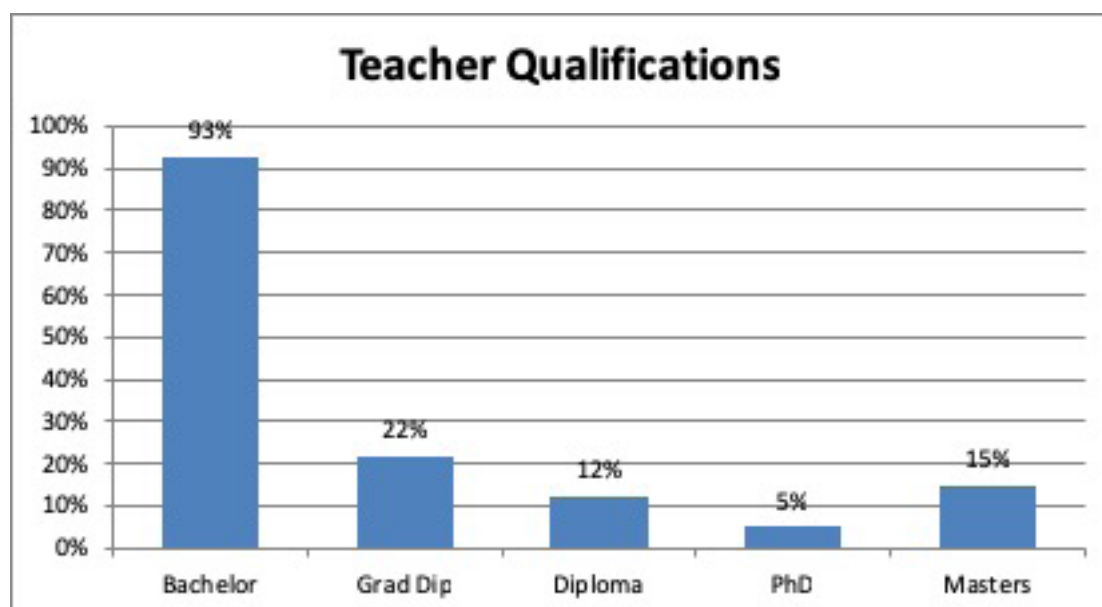
Students at Fahan School are involved and participate at very high levels in a wide variety of learning opportunities. Co-curricular activities include:

- Intra and Inter school sport
- Community service
- Peer mentoring – big sister, little sister program
- Interstate trips
- International trips
- Broad range of cultural pursuits including music, drama, dance and art
- Eisteddfods
- Outdoor education and field trips
- International and interstate student exchanges
- Amnesty International
- Duke of Edinburgh's International Award
- Scholastic clubs
- Rowing
- Debating

Staffing and Employment Matters

It is a legal requirement that teachers employed in Tasmania are registered with the Tasmanian Teachers Registration Board. All teachers employed by Fahan School are registered and hold appropriate qualifications.

The percentage of Fahan School teachers holding one or more relevant qualifications is detailed in the table below:-



During 2018, teaching staff were involved in professional development activities addressing the latest teaching techniques and strategies in a variety of areas.

Fahan School staff are committed to the philosophy and ethos of the school and voluntarily choose to remain with the school. Fahan School farewelled Rowena Conacher, Jane Macrossan, Eve Mure and Anu Verma from the teaching staff at the end of the 2018 year.

95% of teaching staff employed for 2017 continued to work at Fahan during 2018, with the exception of those who commenced/continued on approved maternity leave or who were employed to cover fixed term vacancies.

Levels of Involvement

Parent and Student appraisals indicate high levels of satisfaction at Fahan School. Fahan School is fortunate to be supported by strong parental involvement in many aspects of school life, including voluntarily service in classrooms and School tuckshop, Board and Committee membership, Parents and Friend forums, out of school hours sporting assistance (such as coaching and umpiring). Clearly the extensive parent support and assistance is indicative of the school community satisfaction with the direction and operation of Fahan School.

In 2016 the School conducted a parent satisfaction survey requesting feedback in relation to the following matters:

- | | | |
|------------------------|-----------------------------|--------------------------|
| - Values and Culture | - Curriculum | - Teaching Standards |
| - Homework | - Student Transition | - Leadership & Direction |
| - Co-curriculum | - Learning Environment | - Reporting |
| - Student Engagement | - Learning & Extension | - Resources & Facilities |
| - School Communication | - Pastoral Care / Wellbeing | - Parent Engagement |
| - General | | |

Response to the survey was extremely high and Fahan School was very pleased to receive an overall satisfaction rating of 83%, an excellent outcome that is reflective of the very high average satisfaction rating of 4.16 out of 5 across all categories.

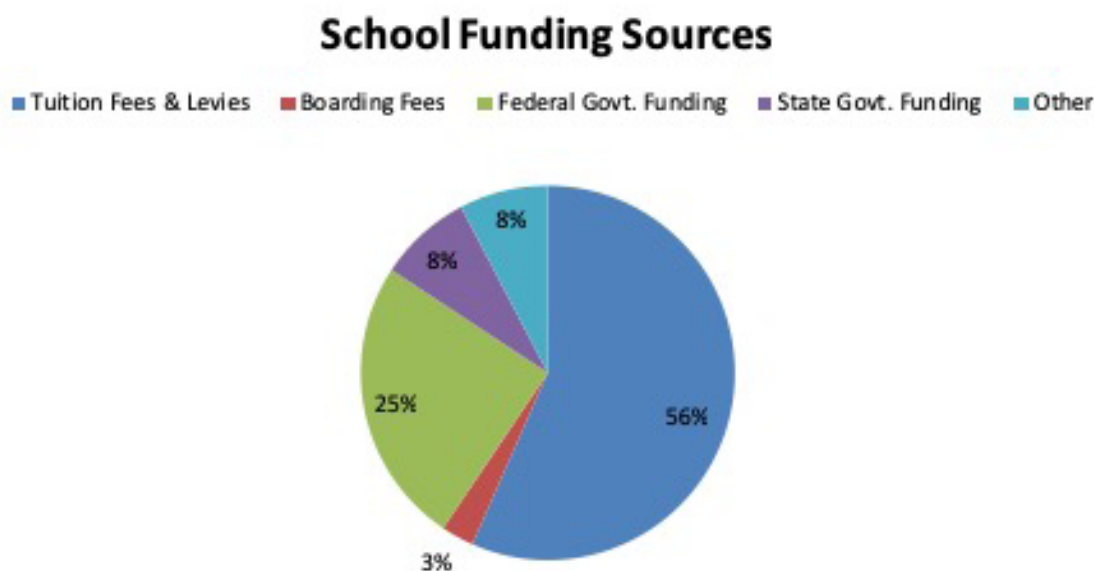
Periodic parent surveys are an important tool for Fahan School in ensuring the School is meeting the needs of the School Community.

The next parent satisfaction survey will be undertaken in 2019.

The Fahan School community are invited to have input into Schools Capital Development Plan. These plans identify priorities for Fahan School for the benefit of future students and community. Furthermore, Fahan School has a well-established "open door" policy where community members, past present and future, are always welcome to visit, observe and share their thoughts on "life at Fahan".

School Income

The following chart depicts Fahan School's income for the 2018 year broken down by funding source.



*If you have any questions or comments related to this report, please address them to:
Principal, Fahan School, Phone (03) 6225 1064*