

## Annual Report 2010

The following report has been prepared in response to the Australian Government requirements that schools report on specific issues to their stakeholders on an annual basis. This report relates to information from the operation of Fahan School in 2010.

Fahan School is a unique school for girls providing valued education and homely boarding facilities to girls from Kindergarten to Year 12. Fahan School also provides education to boys from Kindergarten to Year 2.

Fahan School is set amongst magnificent gardens and tranquil environment overlooking the picturesque Derwent River.

During 2010, there were 349 students enrolled, including 12 international students, with 25 of those boarding at Fahan School.

Fahan School aims to provide an excellent education experience for its students, while at the same time allowing for reflection and the development of personal, social and community life skills.

The staff at Fahan are a special breed. In terms of their skills and willingness to interact and assist students, Fahan is richly blessed with a highly competent and engaged group of professionals. They have the welfare of their students in their charge as their single greatest priority.

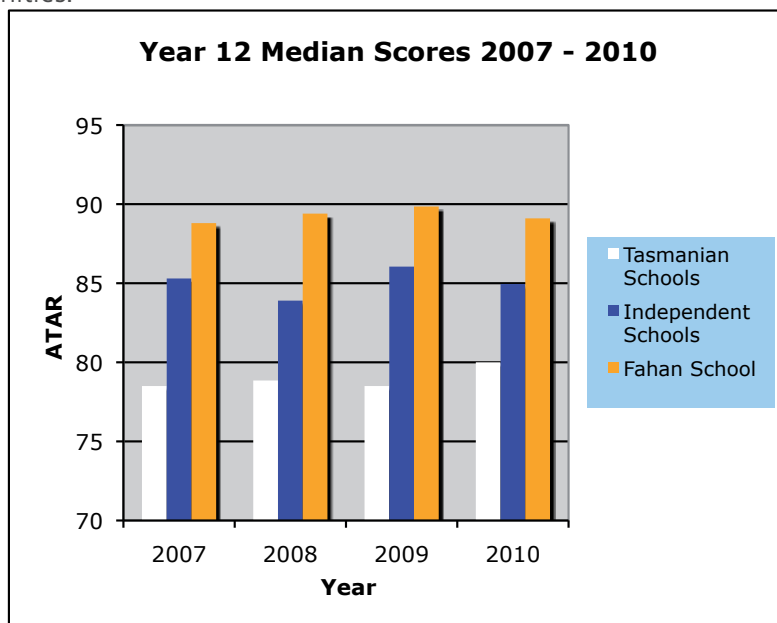
### Student Outcomes

Students are encouraged to achieve to their potential and continue their studies post-Year 12 at university, TAFE or move to satisfying and fulfilling work opportunities.

In 2010, students completing Year 12 at Fahan School received excellent results across a range of subject areas.

In summary, 75% scored 50 or better in their TE ranking, with 37% achieving a ranking of 90 plus.

The overall median score for 2010 was 89.1 with 20% of the class achieving a ranking in the top 5% of the nation.

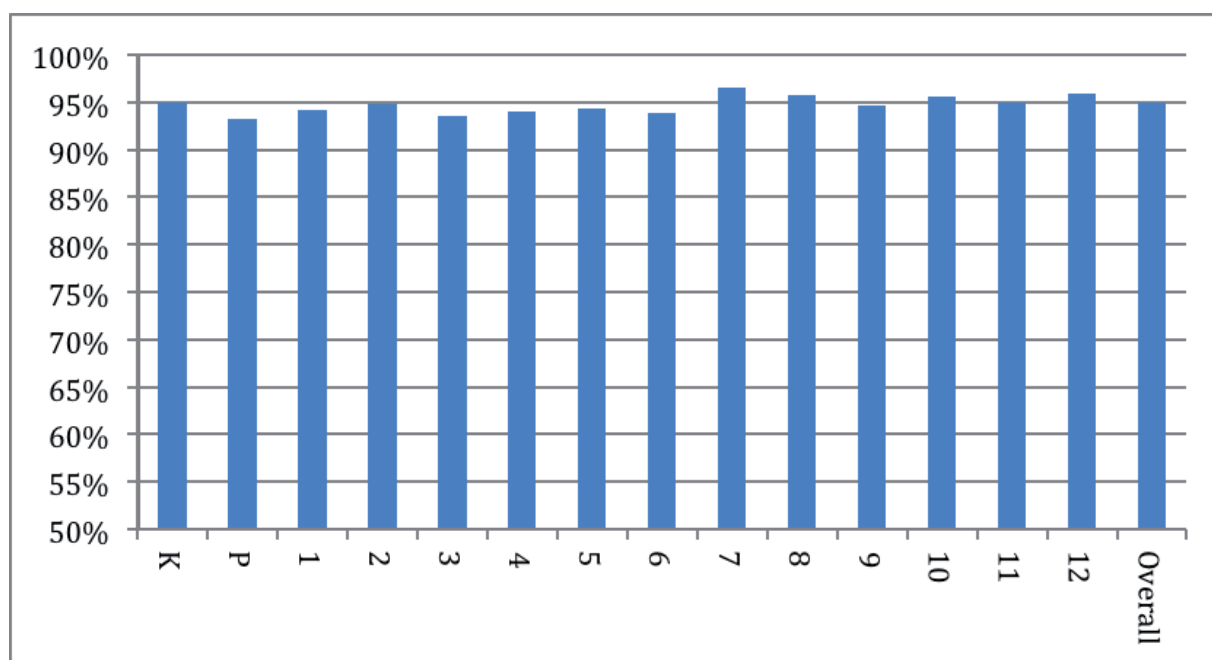


A summary of the 2010 post school destinations for Fahan School Year 12 students is shown in the following table.

School Year - 2010	Number of Students	Percentage of Students
Students studying at University	22	63%
Students who gained entrance to university now working (GAP)	9	26%
Students working	4	11%
Total Year 12 Students	35	100%

## Attendance

The average student attendance rate in 2010 was 95% comprised as follows:



### *Attendance Policy:*

Student attendance is managed, recorded and monitored in accordance with the School's attendance procedures, a copy of which is available on request.

## Other Student Matters

80% of the Fahan School cohort in 2008 enrolled in Year 12 in 2010.

Students at Fahan School are involved in a wide variety of learning opportunities. Co-curricular activities include:

- Intra and Inter school sport
- Community service
- Peer mentoring – big sister, little sister
- Interstate trips
- International trips
- Broad range of cultural pursuits including music, drama, dance and art
- Eisteddfods
- Outdoor education and field trips
- International and interstate student exchanges
- Amnesty international
- Duke of Edinburgh's Award
- Scholastic clubs

The following table indicates Standardised Test results of Fahan School students in the areas of reading, writing and numeracy for Years 3, 5, 7 and 9. The first part of the table shows the percentage of Fahan School students who achieved national benchmark for that area. The second part of the table compares the 2010 cohort results with those of the 2009 cohort. The difference corresponds to the increase or decrease in the percentage of the cohort who achieved the benchmark in comparison with the previous year. It must be noted that the comparison relates to two different sets of students, i.e Year 3 in 2010 compared with Year 3 in 2009.

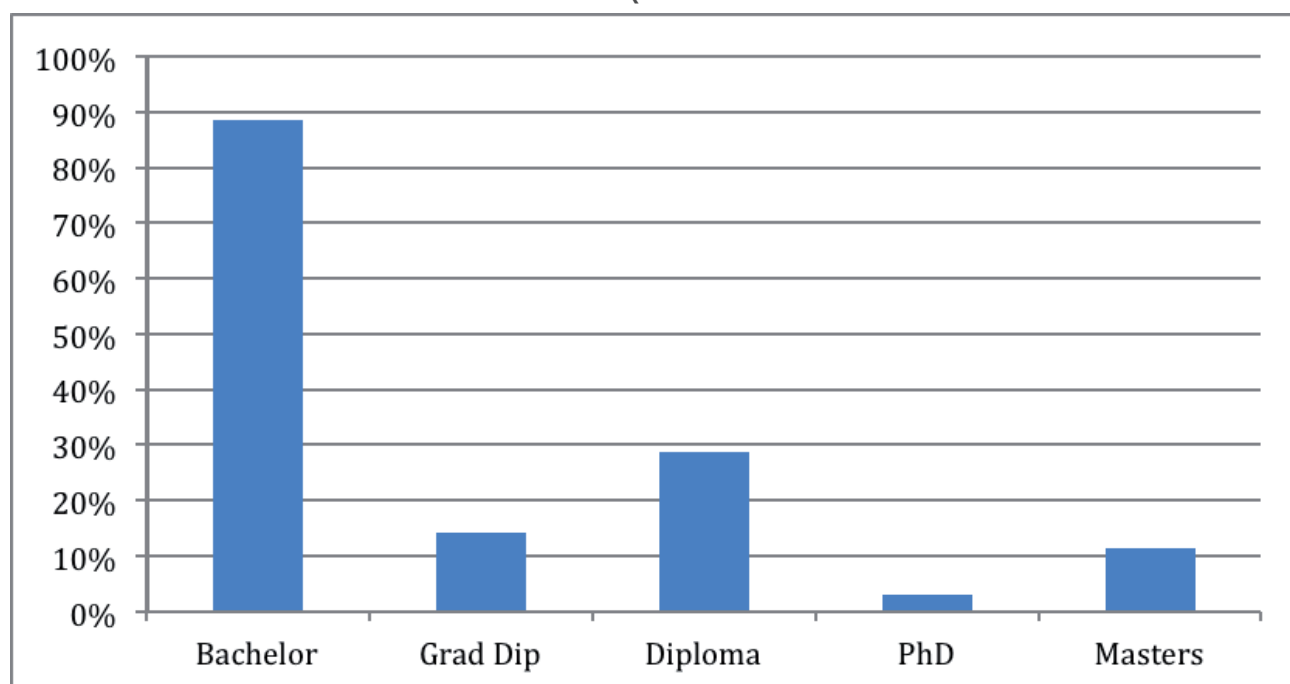
	Year level	% of students who achieved national benchmark	Changes from 2009 to 2010
Numeracy	3	93%	100% (1 student)
	5	100%	96%
	7	100%	NIL
	9	97%	93% (1 student)
Writing	3	93%	100% (1 student)
	5	100%	92%
	7	94%	100% (2 students)
	9	94%	90% (2 student)
Reading	3	93%	100% (1 student)
	5	100%	96%
	7	100%	NIL
	9	97%	93% (1 student)

## Staffing and Employment Matters

It is a legal requirement that teachers employed in Tasmania are registered with the Tasmanian Teachers Registration Board. All teachers employed by Fahan School are registered and hold appropriate teacher qualifications.

The percentage of Fahan School teachers holding one or more relevant qualifications is detailed in the table below:-

*Teacher Qualifications*



During 2010, teaching staff were involved in professional development activities addressing latest teaching techniques and strategies in a variety of areas.

## Levels of Involvement

Parent and Student appraisals indicate high levels of satisfaction at Fahan School. Fahan School is fortunate to be supported by strong parental involvement in many aspects of school life, including voluntary service in classrooms and School tuckshop, Board and Committee membership, Parents and Friend forums, out of school hours sporting assistance (such as coaching and umpiring). Clearly the extensive parent support and assistance is indicative of the school community satisfaction with the direction and operation of Fahan School.

Fahan School staff are committed to the philosophy and ethos of the school and voluntarily choose to remain with the school. During 2010 Fahan School farewelled Graham Broomhall and Maggie Westbrook.

88% of teaching staff employed for 2009 continued to work at Fahan during 2010, with the exception of those who commenced/continued on approved maternity leave.

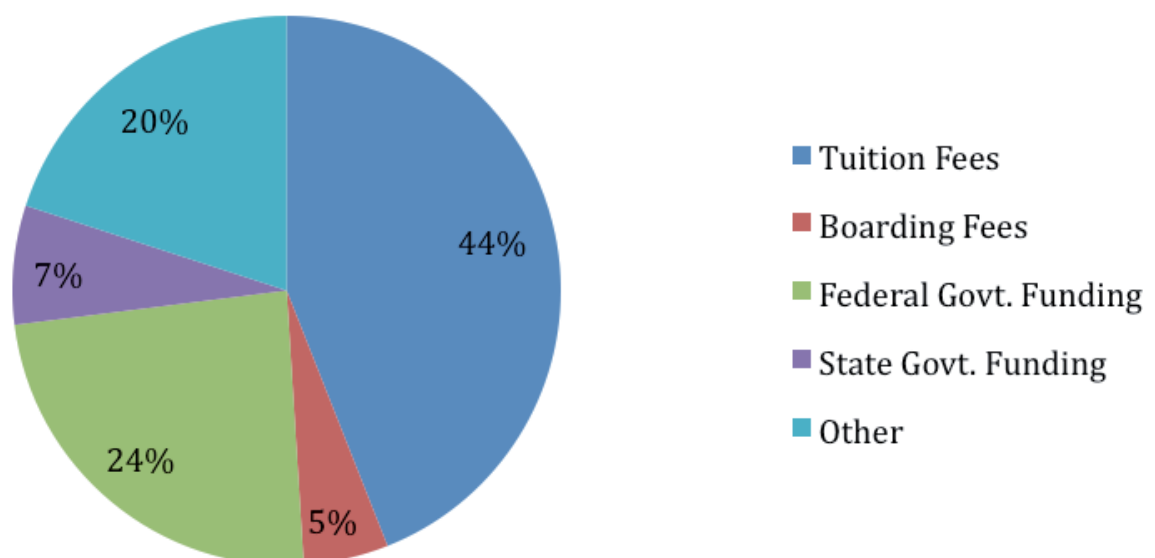
Student participation rates in a wide range of activities in and outside school time is very high and student attendance rates are also very high as detailed previously.

The Fahan School community are invited to have input into the Schools Capital Development Plan. These plans identify priorities for Fahan School for the benefit of future students and community. Furthermore, Fahan School has a well established "open door" policy where community members, past, present and future, are always welcome to visit, observe and share their thoughts on "life at Fahan".

## School Income

The following chart depicts Fahan School's income for the 2010 year broken down by funding source.

*Fahan School Income by Funding Source*



*If you have any questions or comments related to this report, please address them to:  
Mr Tony Freeman, Principal Fahan School  
Phone 03 6225 1064*