

Annual Report 2011

The following report has been prepared in response to the Australian Government requirements that schools report on specific issues to their stakeholders on an annual basis. This report relates to information from the operation of Fahan School in 2011.

Fahan School is a unique school for girls providing valued education and homely boarding facilities to girls from Kindergarten to Year 12. Fahan School also provides education to boys from Kindergarten to Year 2.

Fahan School is set amongst magnificent gardens and tranquil environment overlooking the picturesque Derwent River.

During 2011, there were 356 students enrolled, including 13 international students, with 23 students boarding at Fahan School.

Fahan School aims to provide an excellent education experience for its students, while at the same time allowing for reflection and the development of personal, social and community life skills.

The staff at Fahan are a special breed. In terms of their skills and willingness to interact and assist students, Fahan is richly blessed with a highly competent and engaged group of professionals. They have the welfare of their students in their charge as their single greatest priority.

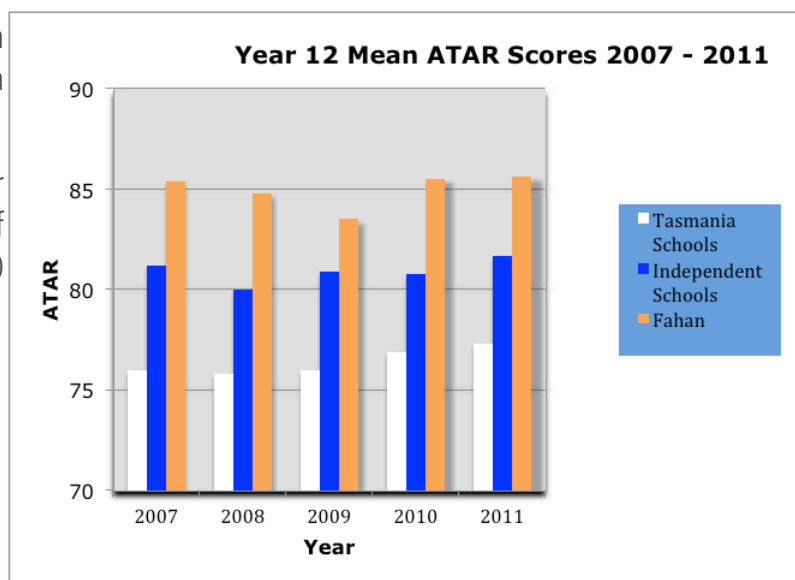
Student Outcomes

Students are encouraged to achieve to their potential and continue their studies post-Year 12 at university, TAFE or move to satisfying and fulfilling work opportunities.

In 2011, students completing Year 12 at Fahan School received outstanding results across a range of subject areas.

In summary, 100% scored 50 or better in their TE ranking, with 39% achieving a ranking of 90 plus and 80% achieving a ranking of 80 plus.

The overall median score for 2011 was 86.



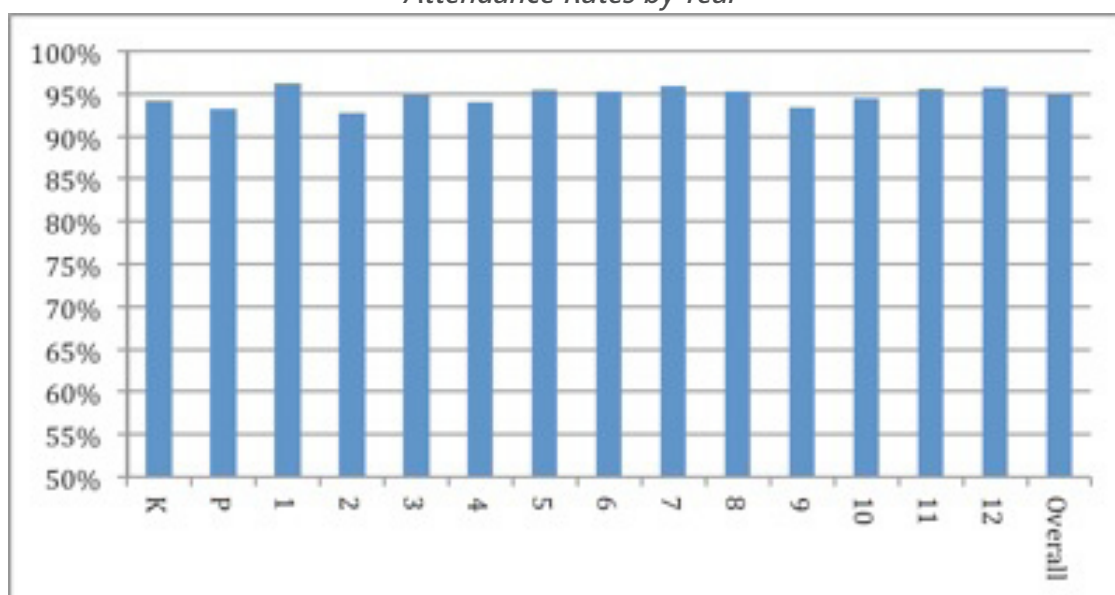
A summary of the 2011 post school destinations for Fahan School Year 12 students is shown in the following table.

School Year - 2011	Number of Students	Percentage of Students
Students studying at University	23	64%
Students who gained entrance to university now working (GAP)	8	22%
Students working	4	11%
Students studying at TAFE	1	3%
Total Year 12 Students	35	100%

Attendance

The average student attendance rate in 2011 was 95% comprised as follows:

Attendance Rates by Year



Attendance Policy:

Student attendance is managed, recorded and monitored in accordance with the School's attendance procedures, a copy of which is available on request.

Other Student Matters

92% of the Fahan School cohort in 2009 enrolled in Year 12 in 2011.

Students at Fahan School are involved in a wide variety of learning opportunities. Co-curricular activities include:

- Intra and Inter school sport
- Community service
- Peer mentoring – big sister, little sister
- Interstate trips
- International trips
- Broad range of cultural pursuits including music, drama, dance and art
- Eisteddfods
- Outdoor education and field trips
- International and interstate student exchanges
- Amnesty international
- Duke of Edinburgh's Award
- Scholastic clubs

NAPLAN Results

100% of Fahan students obtained scores at or above the National Minimum Standard in 2011 NAPLAN tests. This was across all years tested and all test categories. The outstanding results led to Fahan being the only Tasmanian school listed in both the Top 100 Primary and Top 100 Secondary Schools in the Nation (*Australian*, 7 April 2012). The table below indicates Standardised Test results of Fahan School students in the areas of reading, writing and numeracy for Years 3, 5, 7 and 9 over the last four years. The percentage variance shown is a comparison with the previous years and also this year's Tasmanian and National means. It must be noted that the comparison relates to two different sets of students, i.e Year 3 in 2009 compared with Year 3 in 2008.

Mean score comparison against previous years with % variance

Year 3	Reading		Writing		Spelling		Grammar		Numeracy	
Fahan 2011	494		466		458		501		469	
Fahan 2010	492	0%	458	2%	410	12%	447	12%	466	1%
Fahan 2009	476	4%	456	2%	444	3%	460	9%	464	1%
Fahan 2008	447	11%	483	-4%	460	0%	473	6%	434	8%
Similar	473	4%	436	7%	435	5%	469	7%	441	6%
Tasmania	411	20%	400	17%	394	16%	410	22%	391	20%
Australia	416	19%	416	12%	406	13%	422	19%	398	18%

Year 5	Reading		Writing		Spelling		Grammar		Numeracy	
Fahan 2011	589		541		515		598		552	
Fahan 2010	529	11%	535	1%	539	-4%	577	4%	525	5%
Fahan 2009	534	10%	491	10%	509	1%	538	11%	510	8%
Fahan 2008	520	13%	497	9%	484	6%	525	14%	510	8%
Similar	534	10%	502	8%	502	3%	531	13%	517	7%
Tasmania	486	21%	465	16%	470	10%	488	23%	478	15%
Australia	488	21%	482	12%	484	6%	500	20%	488	13%

Year 7	Reading		Writing		Spelling		Grammar		Numeracy	
Fahan 2011	591		593		584		622		599	
Fahan 2010	609	-3%	570	4%	575	2%	619	0%	607	-1%
Fahan 2009	601	-2%	592	0%	571	2%	608	2%	542	11%
Fahan 2008	611	-3%	602	-1%	573	2%	596	4%	580	3%
Similar	590	0%	569	4%	562	4%	580	7%	586	2%
Tasmania	534	11%	507	17%	525	11%	523	19%	532	13%
Australia	540	9%	529	12%	538	9%	533	17%	545	10%

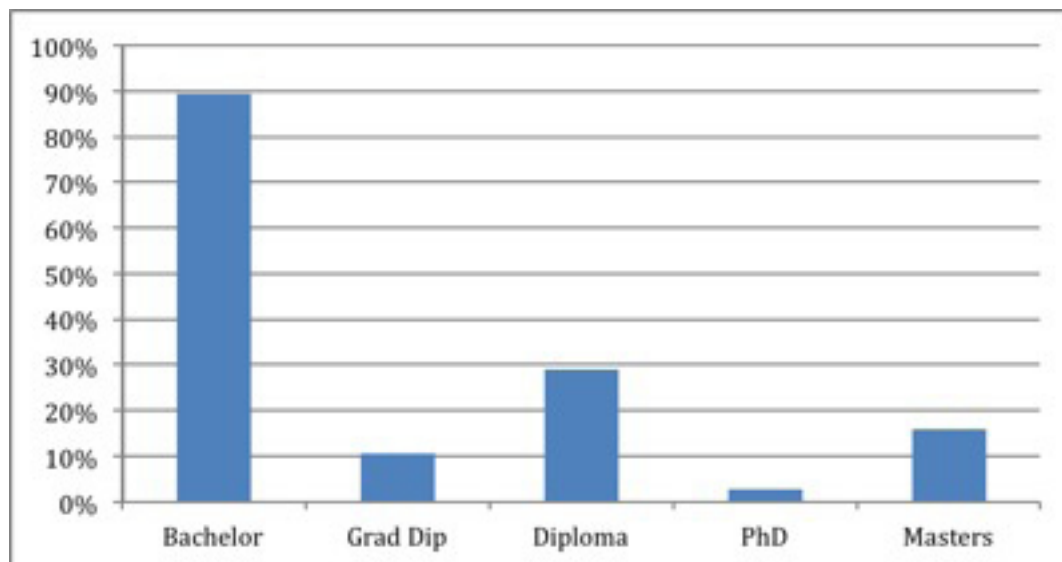
Year 9	Reading		Writing		Spelling		Grammar		Numeracy	
Fahan 2011	636		677		630		627		607	
Fahan 2010	631	1%	589	15%	607	4%	626	0%	615	-1%
Fahan 2009	647	-2%	650	4%	631	0%	639	-2%	632	-4%
Fahan 2008	644	-1%	661	2%	638	-1%	653	-4%	607	0%
Similar	636	0%	641	6%	614	3%	631	-1%	623	-3%
Tasmania	574	11%	547	24%	566	11%	562	12%	567	7%
Australia	580	10%	568	19%	582	8%	573	9%	584	4%

Staffing and Employment Matters

It is a legal requirement that teachers employed in Tasmania are registered with the Tasmanian Teachers Registration Board. All teachers employed by Fahan School are registered and hold appropriate teacher qualifications.

The percentage of Fahan School teachers holding one or more relevant qualifications is detailed in the table below:-

Teacher Qualifications



During 2011, teaching staff were involved in professional development activities addressing latest teaching techniques and strategies in a variety of areas. The average 2011 expenditure per FTE teacher at Fahan School on professional learning was \$546.

Levels of Involvement

Parent and Student appraisals indicate high levels of satisfaction at Fahan School. Fahan School is fortunate to be supported by strong parental involvement in many aspects of school life, including voluntarily service in classrooms and School tuckshop, Board and Committee membership, Parents and Friends forums and out of school hours sporting assistance (such as coaching and umpiring). Clearly the extensive parent support and assistance is indicative of the school community satisfaction with the direction and operation of Fahan School.

The next major survey of school parents is scheduled to take place during the 2012 school year.

Fahan School staff are committed to the philosophy and ethos of the School and voluntarily choose to remain with the school. During 2011 Fahan School farewelled Rosemary Sargison, Sue Ekins, Sophie Edwards, Bronwyn Fuller and Susan Smith.

89% of teaching staff employed for 2010 continued to work at Fahan during 2011, with the exception of those who commenced/continued on approved maternity leave.

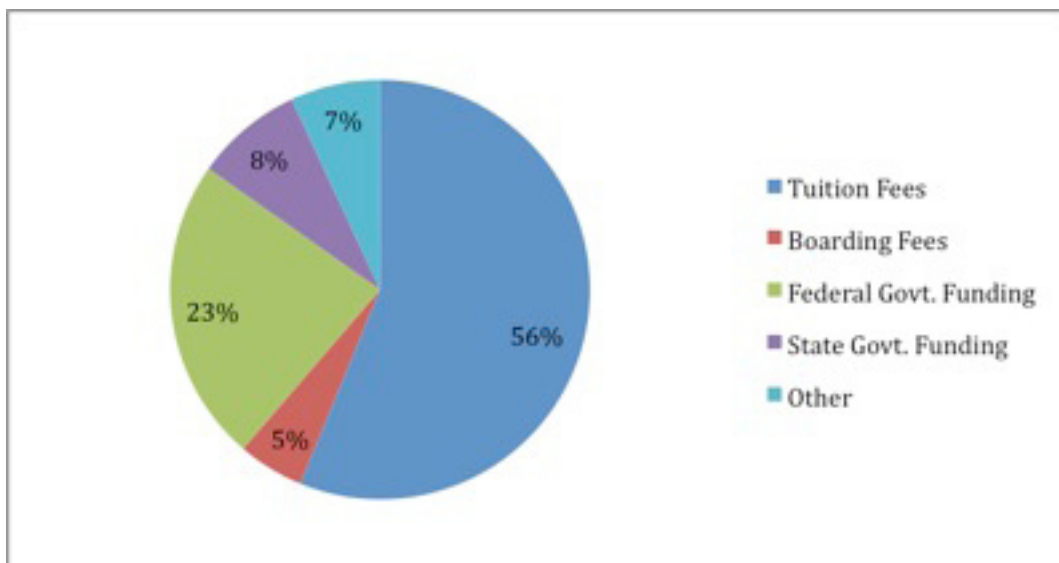
Student participation rates in a wide range of activities in and outside school time is very high and student attendance rates are also very high as detailed previously.

The Fahan School community are invited to have input into Schools Capital Development Plan. These plans identify priorities for Fahan School for the benefit of future students and the community. Furthermore, Fahan School has a well established "open door" policy where community members, past, present and future, are always welcome to visit, observe and share their thoughts on "life at Fahan".

School Income

The following chart depicts Fahan School's income for the 2011 year, broken down by funding source.

Fahan School Income by Funding Source



*If you have any questions or comments related to this report, please address them to:
Mr Tony Freeman, Principal Fahan School
Phone 03 6225 1064*